

PSU & PCIE RISER CABLES



PSU ADAPTER CABLES

Dual SATA to 8-Pin CPU Power Adapter Cable

- Converts two SATA connectors to one CPU 4+4 connector
- Length: 15cm / 18AWG
- Black sleeved cable



Motherboard

Power Supply



4+4 Pin CPU Connector

SATA Power

Product Code: AK-CBPW33-15

G-Nexus P16 Plus 90 Degree 12V-2X6 GPU Power Adapter

- Converts one 12+4-pin male power connector to one 12+4-pin female power connector
- 90 degree design prevents cable stress and optimises cable routing
- Compact aluminium design
- Backwards compatible with 12VHPWR connector



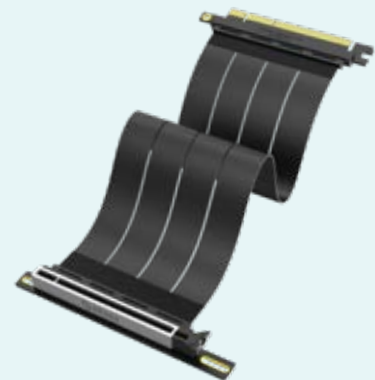
600
W



90°
adapter

Product Code: AK-CBPW34-BK

PCIE RISER CABLE



RISER BLACK X3 Mark V Premium PCIe 5.0 x16 Riser Cable

- Features a 90 degree PCIe connector and flexible cable for vertical GPU mounting
- Ultra-high-speed PCIe 5.0 bandwidth of up to 126GB/s
- Ideal for high-performance gaming systems and professional workstations
- 0.8mm thickness with powerful EMI shielding
- Length: 300mm

Product Code: AK-CBPE05-30B



SUPERB DESIGN ENGINEERING